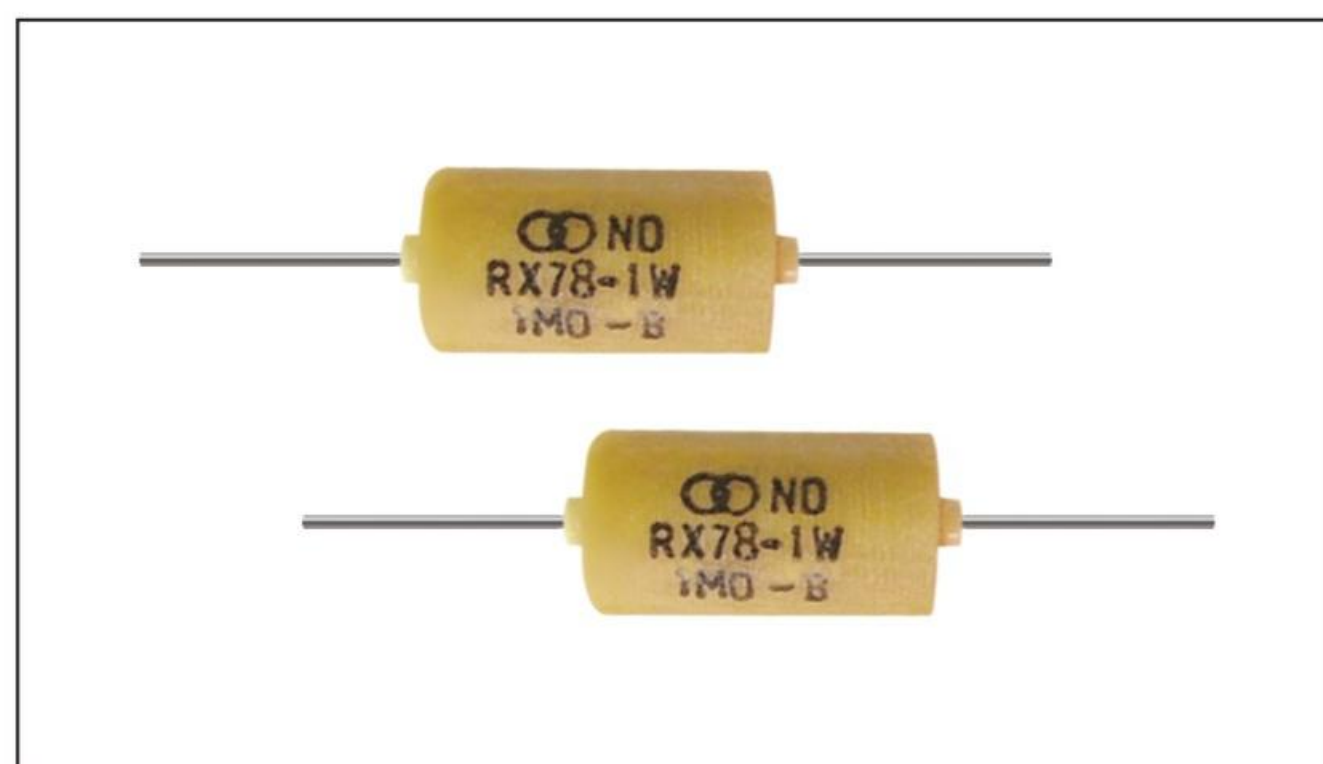
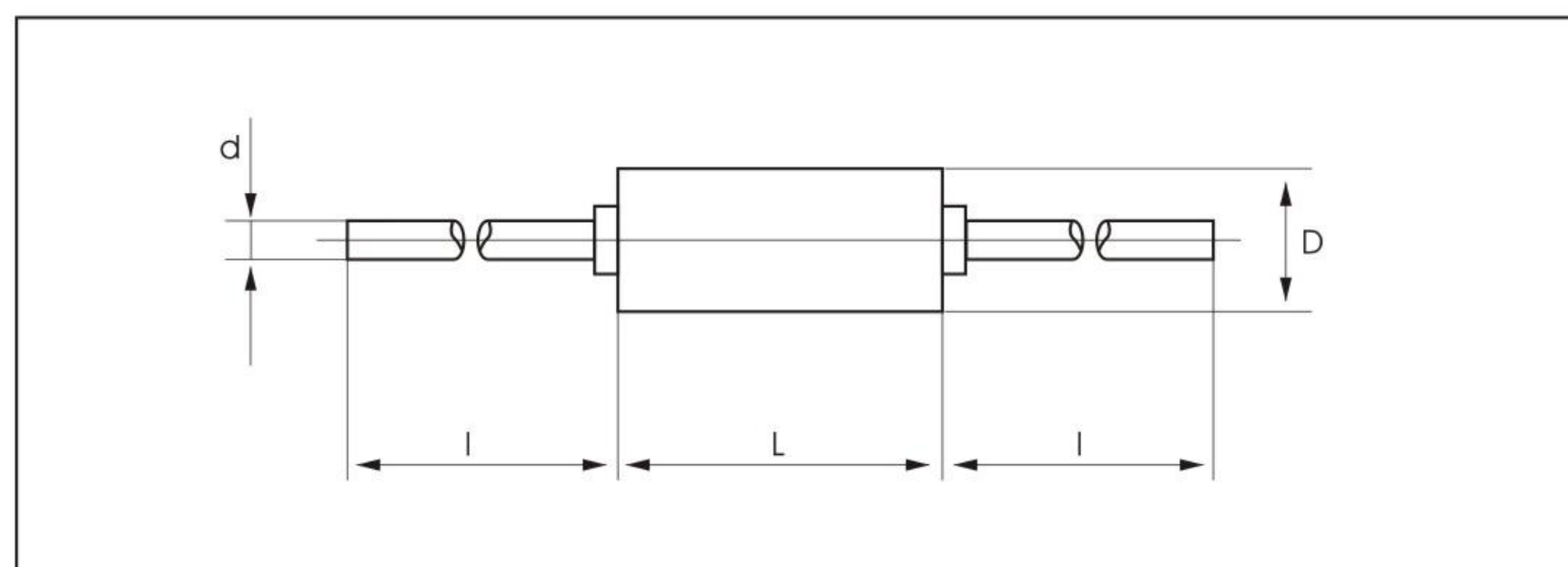


RX78 high value precision wire-wound resistors



Construction



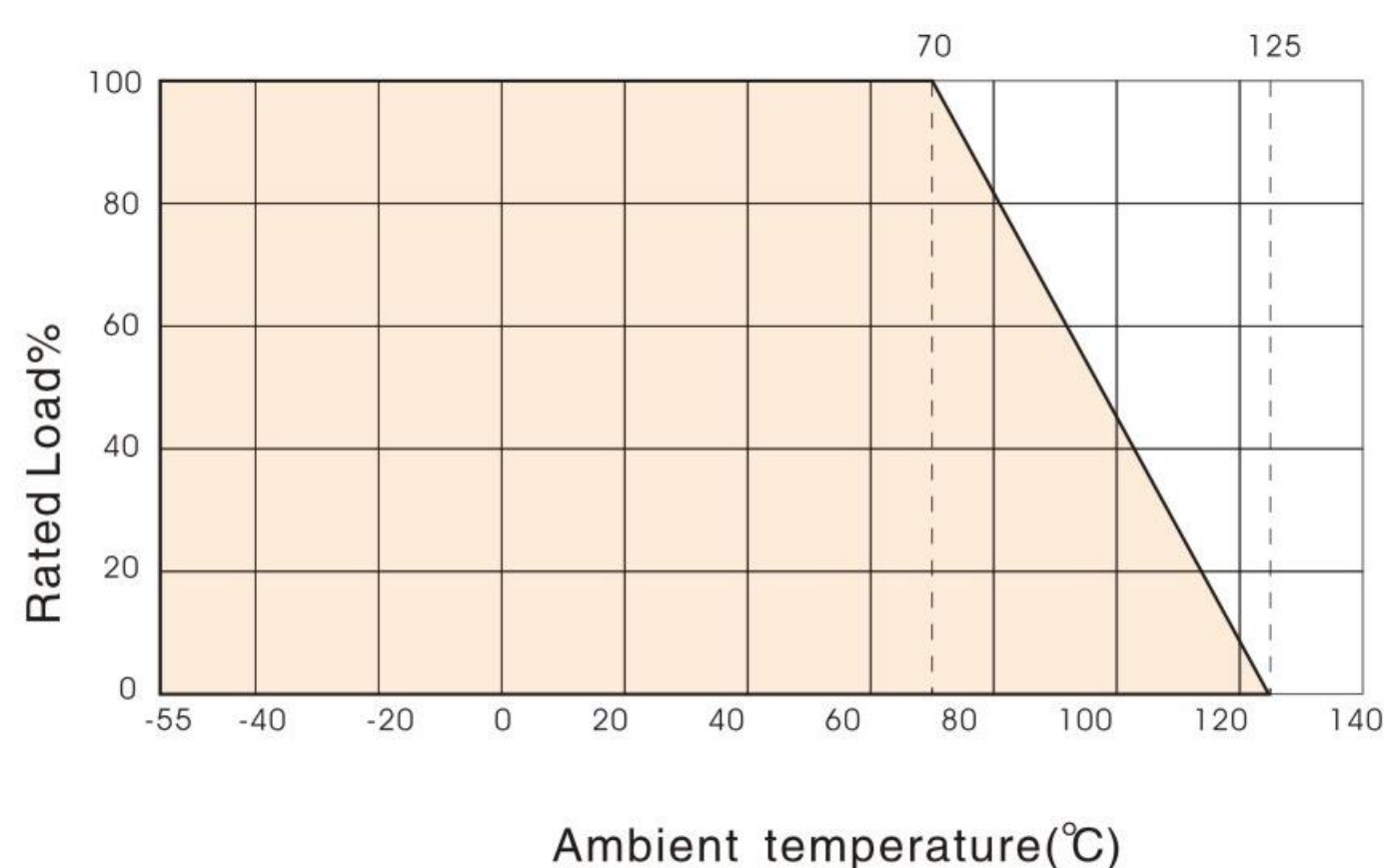
Features

- High resistance value
- Resistance value series according to E series of IEC63
- Excellent stability
- Reliability up to 0.25% and $1 \times 10^{-5}/h$
- Close precision
- Perfect temperature coefficient
- Excellent properties of insulation and humidity-proof

Reference Standards

Q/ATK22-97

Derating Curve



Applications

- Used in meters and instruments

Technical Specifications

Type	Power (W)	Resistance Range (Ω)	Tolerance (%)	T.C.R (10 ⁻⁶ /K)	Size(mm)				Limiting Voltage (DC or AC RMS.)	Insulation Voltage (DC or AC Peak)
					Body		Terminal			
					Dmax	Lmax	d	l		
RX78 (RX9-20)	1	1M~10M	±0.05(W) ±0.1(B) ±0.25(C)	±10	11.5	23	0.8	25	1000	1400
	2	1M~20M	±0.5(D) ±1(F)	±20	11.5	39				
				±25						

How To Order

Example

RX78	1W	10MΩ	±0.05%	±25(10 ⁻⁶ /K)	box
Type	Power	Nominal Value	Tolerance	TCR	Packaging
RX78	1W 2W	10MΩ	±0.05% ±0.1% ±0.25% ±0.5% ±1.0%	±10(10 ⁻⁶ /K) ±20(10 ⁻⁶ /K) ±25(10 ⁻⁶ /K)	box